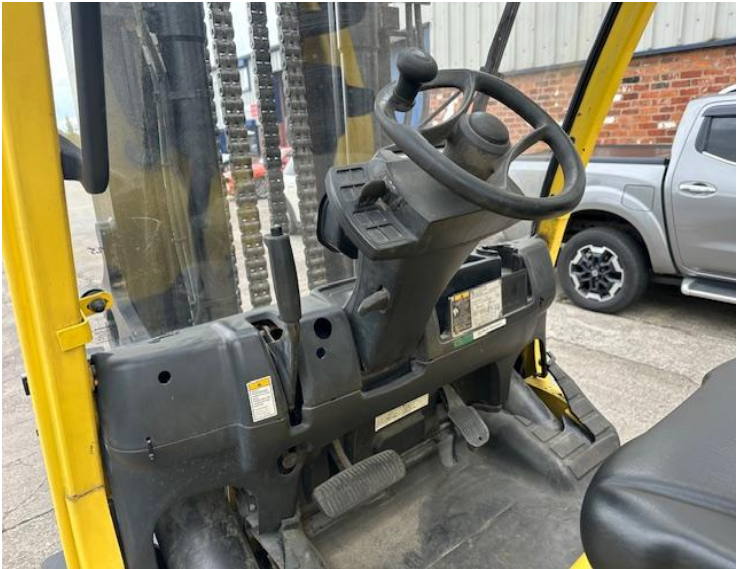




Our Reference	HD 1639
Category	Forklifts 1 to 10 Tonne
Title	Hyster s9.0ft
Make	Hyster
Model	s9.0ft
Age	2010
Mast	Duplex
Hours	13,835
Mast Closed	2500mm
Engine Type	Diesel
Lift Capacity	2250mm Max Lift, 3rd Hydraulics







Trained Operators and Mechanics Only
Read Operating Manual located on seat or in operators compartment
Failure to follow operating, inspection, and maintenance instructions can cause serious injury or death!
CAPACITY WITH MAST VERTICAL AND EQUIPPED AS SHOWN

CE

Lift Truck Model **S9.0FT**
Year of Manufacture **2010**
Serial No. **E024V01955H**
Attachment: 1219 mm S180-200 Carriage + 1800 mm Forks
Nominal Power **60 kW**

Truck Weight **13480 kg**
Tread Width **1133 mm** Back Tilt **5.0 Degrees**

Tyre **Front** **Rear**
Size **28X12X22 Cushion** **22X8X16 Cushion**
Pressure —

MAXIMUM CAPACITY	Load Height		Load Centre	
	Dim. A	Dim. B	Dim. C	Dim. D
8900 kg	5410 mm	600 mm	600 mm	
8010 kg	5410 mm	900 mm	900 mm	

Hyster (Europe) Limited, Hyster House, Reading, RG2 9AT, UK. Printed in England

DuraMatch Transmission



01704 840859 / 07710 084386

Email:sales@hdforklifts.co.uk

HD Forklifts, Unit 2, Heaton Court, Smithy Lane, Scarisbrick, Lancashire, L40 8HS

May 21, 2024, 10:13 am

