

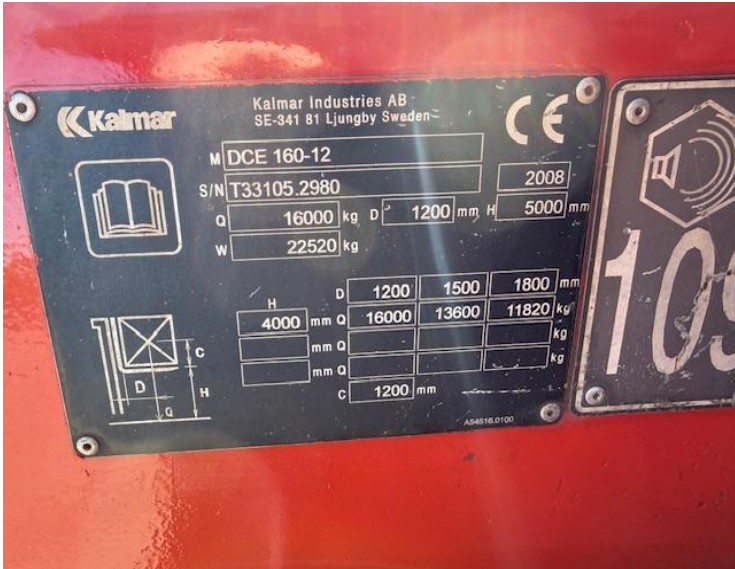
# HEAVY DUTY FORKLIFTS

<b>Our Reference</b>	HD 1703
<b>Category</b>	Forklifts 10 to 60 Tonne
<b>Title</b>	Kalmar Dce 160-12
<b>Make</b>	Kalmar
<b>Model</b>	Dce160-12
<b>Age</b>	2008
<b>Mast</b>	Duplex
<b>Hours</b>	4,870
<b>Mast Closed</b>	3700mm
<b>Engine Type</b>	Diesel
<b>Lift Capacity</b>	16,000Kgs @1200mm Side Shift & Fork Positioners 2400mm Forks









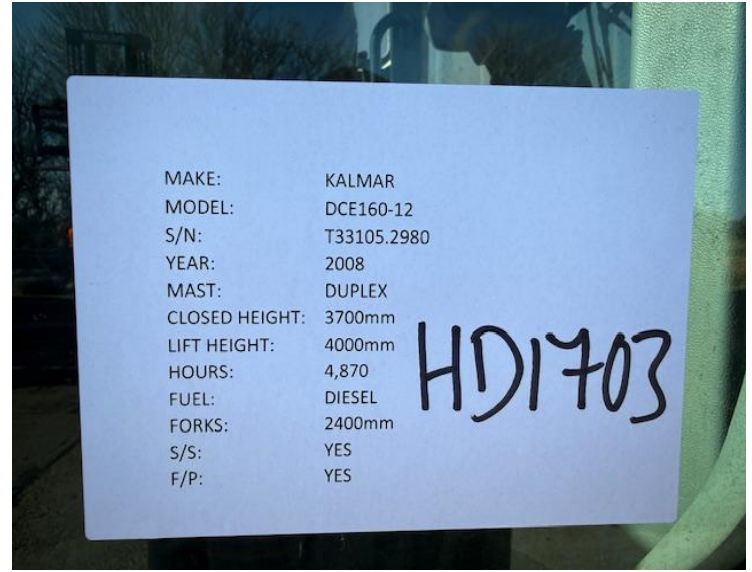


01704 840859 / 07710 084386

Email:sales@hdforklifts.co.uk

HD Forklifts, Unit 2, Heaton Court, Smithy Lane, Scarisbrick, Lancashire, L40 8HS

May 22, 2026, 5:21 pm



MAKE:	KALMAR
MODEL:	DCE160-12
S/N:	T33105.2980
YEAR:	2008
MAST:	DUPLEX
CLOSED HEIGHT:	3700mm
LIFT HEIGHT:	4000mm
HOURS:	4,870
FUEL:	DIESEL
FORKS:	2400mm
S/S:	YES
F/P:	YES

HD1703