

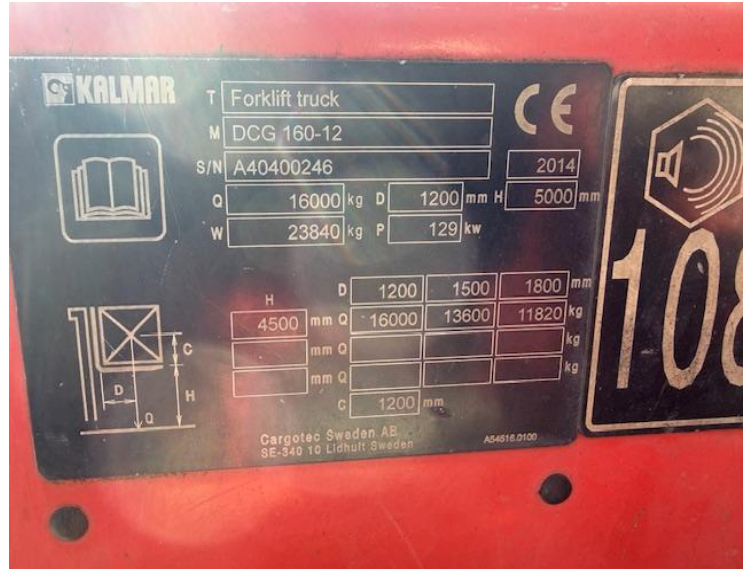
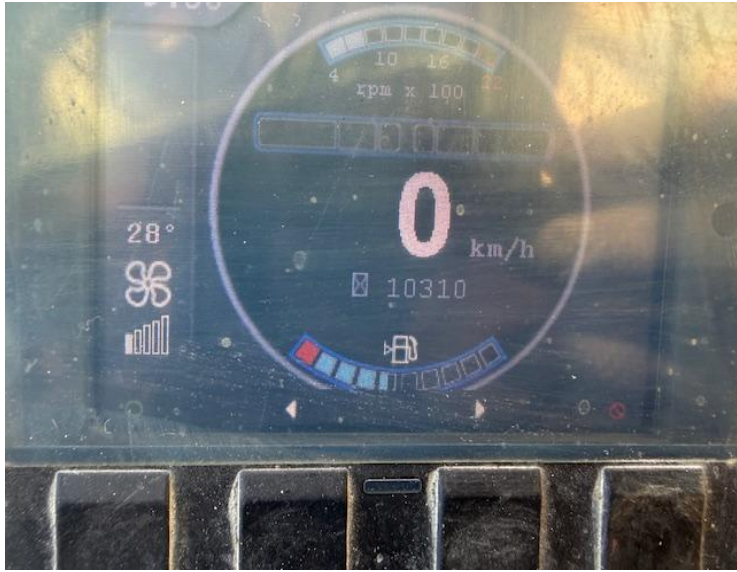


| | |
|----------------------|--|
| Our Reference | HD 1710 |
| Category | Forklifts 10 to 60 Tonne |
| Title | Kalmar Dcg160-12 |
| Make | Kalmar |
| Model | Dcg160-12 |
| Age | 2014 |
| Mast | Duplex |
| Hours | 10,310 |
| Mast Closed | 3950mm |
| Engine Type | Diesel |
| Lift Capacity | 16,000Kgs @1200mm Side Shift & Fork Positioners 2400mm Forks |













01704 840859 / 07710 084386

Email:sales@hdforklifts.co.uk

HD Forklifts, Unit 2, Heaton Court, Smithy Lane, Scarisbrick, Lancashire, L40 8HS

May 22, 2026, 5:20 pm

